



The London Resort Development Consent Order

BC080001

Environmental Statement Volume 3: Figures

Figure 12.12 Preliminary Roost Assessment of Trees

Document reference: 6.3.12.12

Revision: 00

December 2020

Planning Act 2008

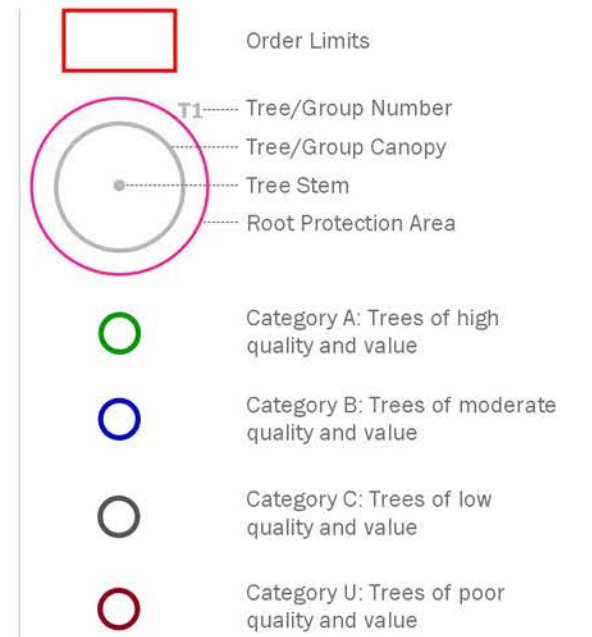
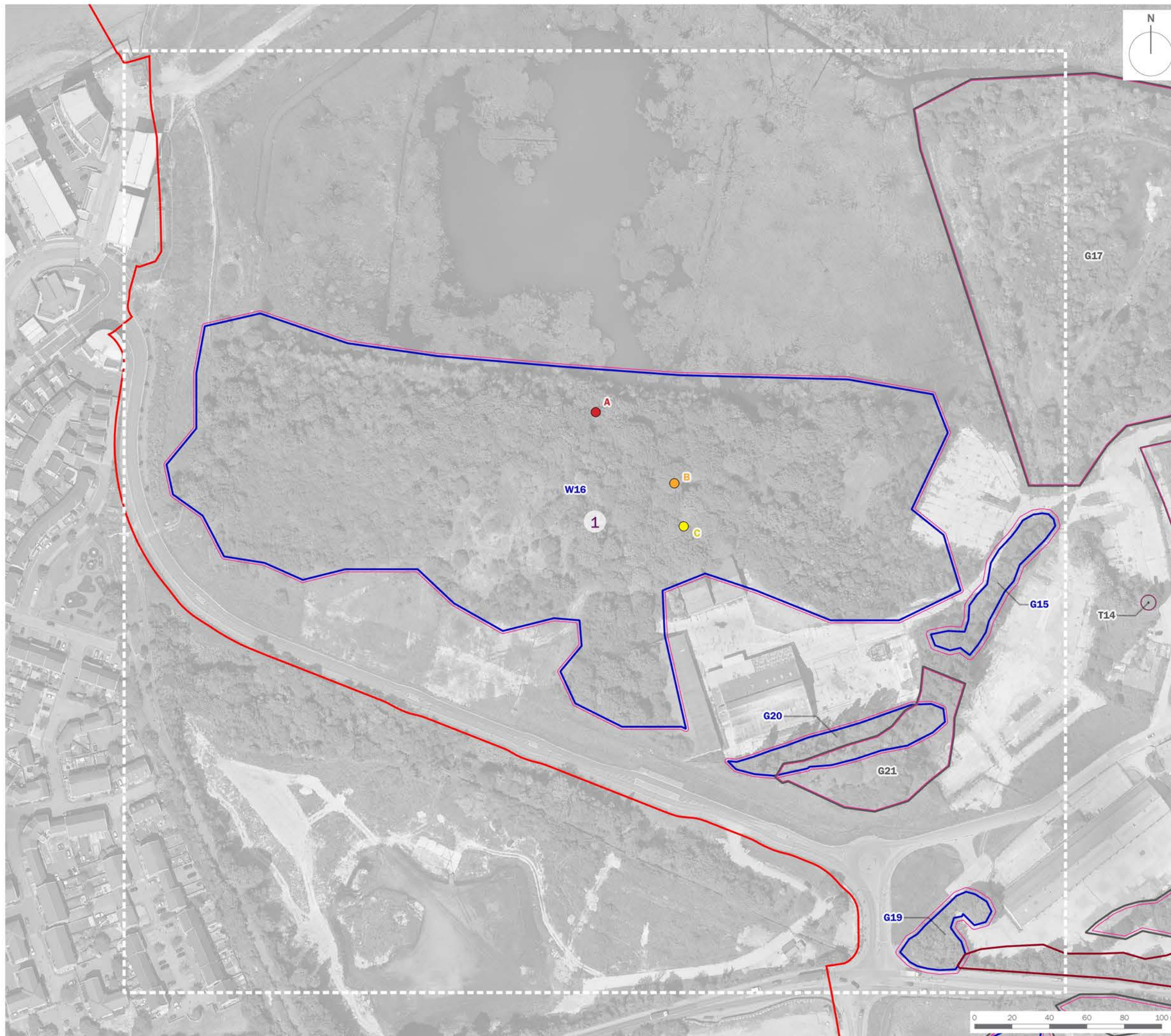
The Infrastructure Planning (Applications: Prescribed Forms and Procedure) Regulations 2009

Regulation 5(2)(a)

The Infrastructure Planning (Environmental Impact Assessment) Regulations 2017

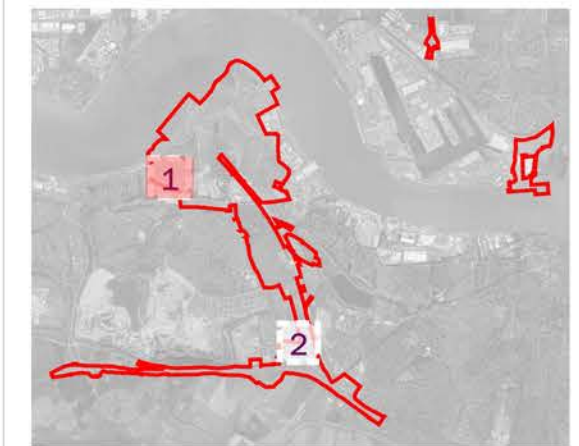
Regulation 12(1)

[This page is intentionally left blank]



Bat Tree Roost Assessment Results

- High
- Moderate
- Low



client
London Resort Company Holdings Limited

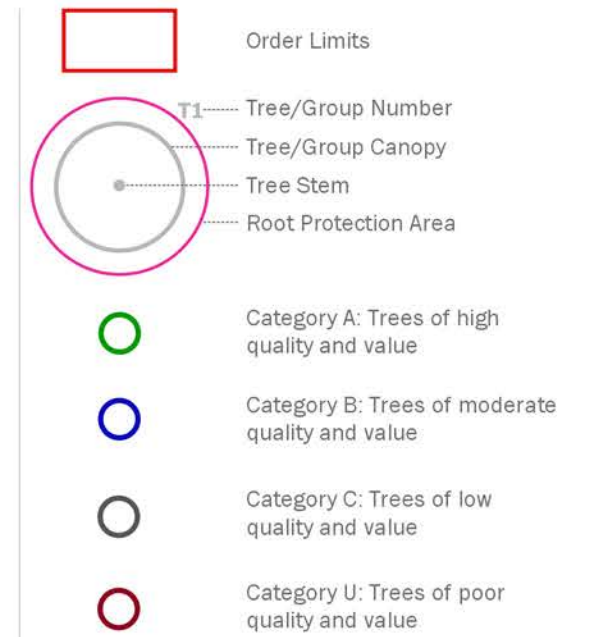
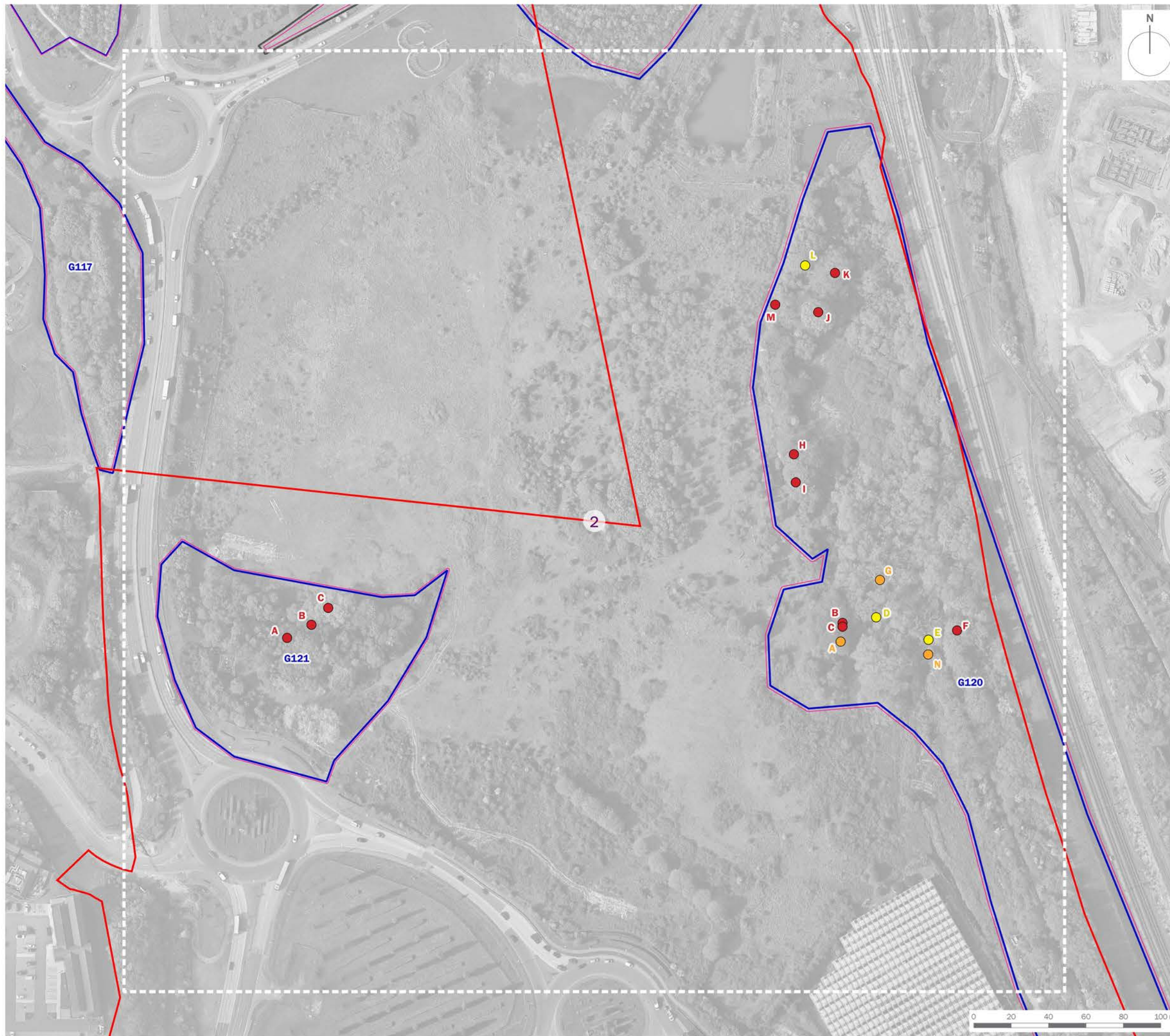
project title
The London Resort

drawing title
Figure 12.12: Preliminary Roost Assessment of Trees (Sheet 1 of 2)

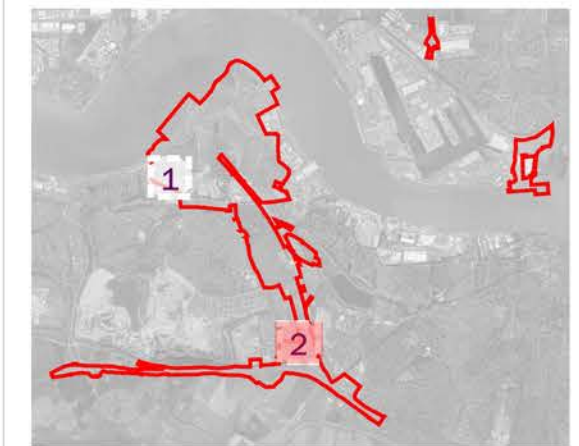
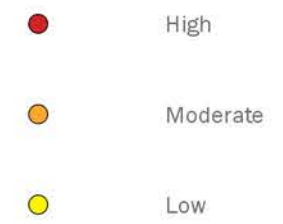
date	17 DECEMBER 2020	drawn by	GY
drawing number	edp5988_d049e	checked	JL
scale	1:2,000 @ A3	QA	JTF



Registered office: 01285 740427 - www.edp-uk.co.uk - info@edp-uk.co.uk



Bat Tree Roost Assessment Results



client
London Resort Company Holdings Limited

project title
The London Resort

drawing title
Figure 12.12: Preliminary Roost Assessment of Trees (Sheet 2 of 2)

date	17 DECEMBER 2020	drawn by	GY
drawing number	edp5988_d049e	checked	JL
scale	1:2,000 @ A3	QA	JTF



Registered office: 01285 740427 - www.edp-uk.co.uk - info@edp-uk.co.uk